

General Timing Chart / General Circuit Diagram

iR2020/2016 Series

Canon

IMPORTANT

This documentation is published by Canon Inc., Japan, to serve as a source of reference for work in the field.

Specifications and other information contained herein may vary slightly from actual machine values or those found in advertising and other printed matter.

Any questions regarding the information contained herein should be directed to the Copier Service Department of the Sales Company.

This documentation is intended for all sales areas, and may contain information not applicable to certain areas.

Reproduction without permission not allowed.

Use of this manual should be strictly supervised to avoid disclosure of confidential information.

COPYRIGHT 2001 CANON INC.

Printed in Japan

Caution

Use of this manual should be strictly supervised to avoid disclosure of confidential information.

Contents

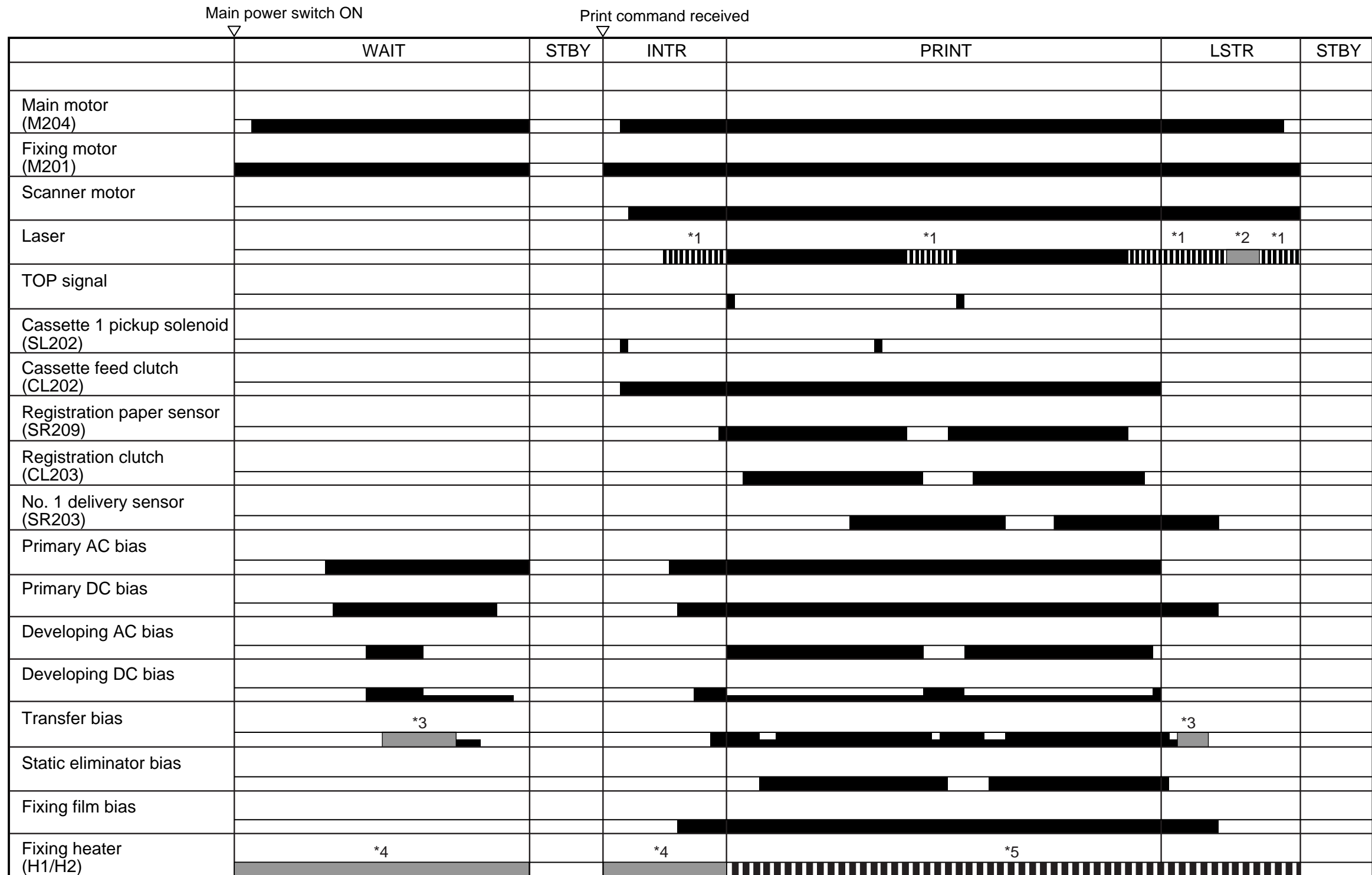
1 General Timing Chart.....	1
At Time of Printing.....	1
Reader Unit	2
2 General Circuit Diagram.....	5
General Circuit Diagram.....	5

1 General Timing Chart

At Time of Printing

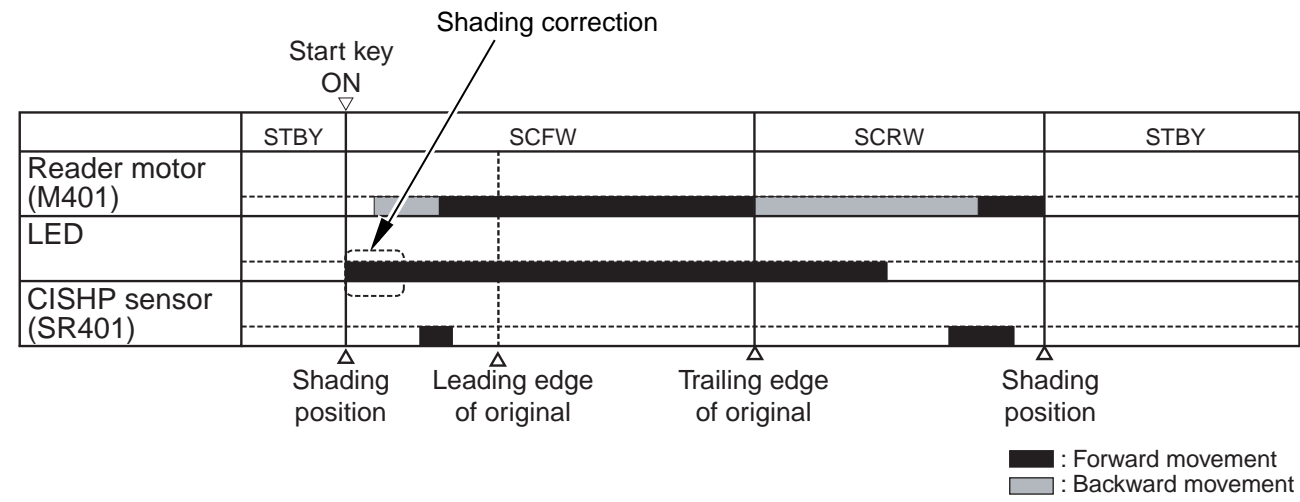
iR2016J / iR2016 / iR2020 / iR2016i / iR2020i

2 Prints, Continuous, Cassette 1



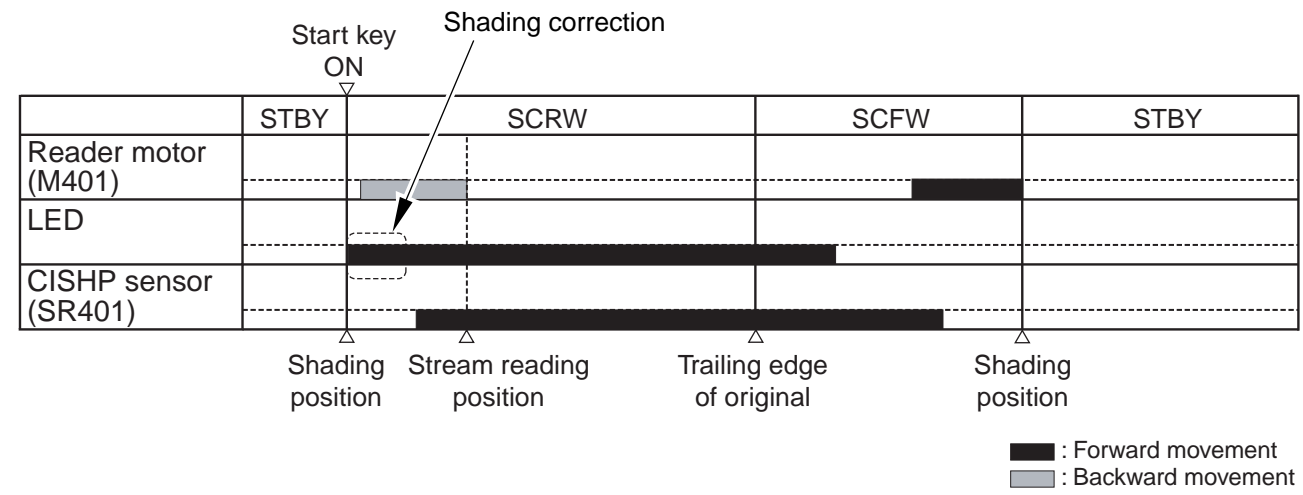
- *1: Horizontal synchronization control
- *2: Automatic photocurrent control (APC)
- *3: Cleaning bias
- *4: Target temperature control
- *5: Temperature control in accordance with the fixing mode

Basic Sequence of Operation (in response to a press on the start key; book mode; 1 original)



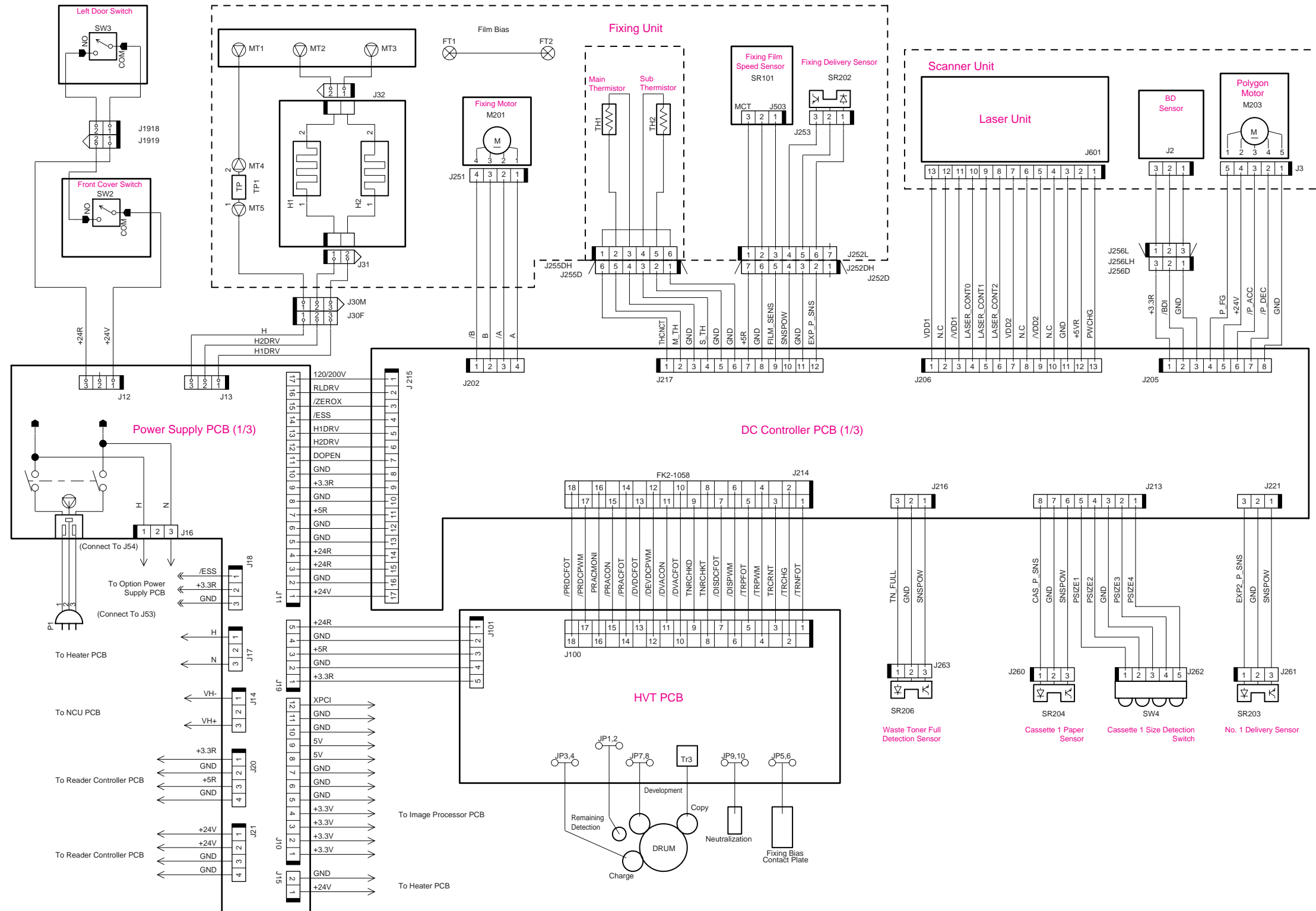
F-1-2

Basic Sequence of Operation (in response to a press on the start key; ADF mode; 1 original)



F-1-3

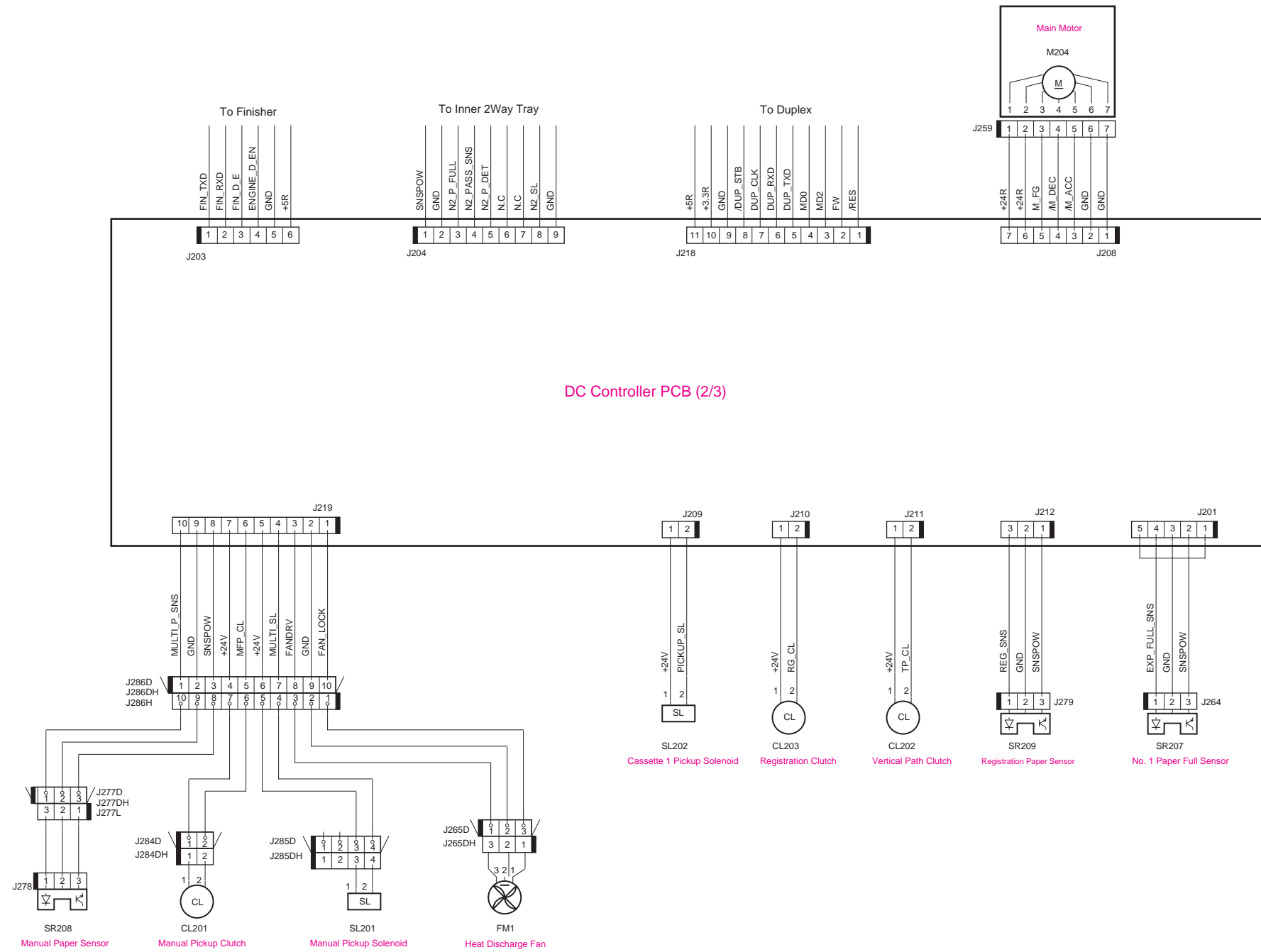
2 General Circuit Diagram
 General Circuit Diagram
 General Circuit Diagram 1
 iR2016J / iR2016 / iR2020 // iR2016i / iR2020i



F-2-1

General Circuit Diagram 2

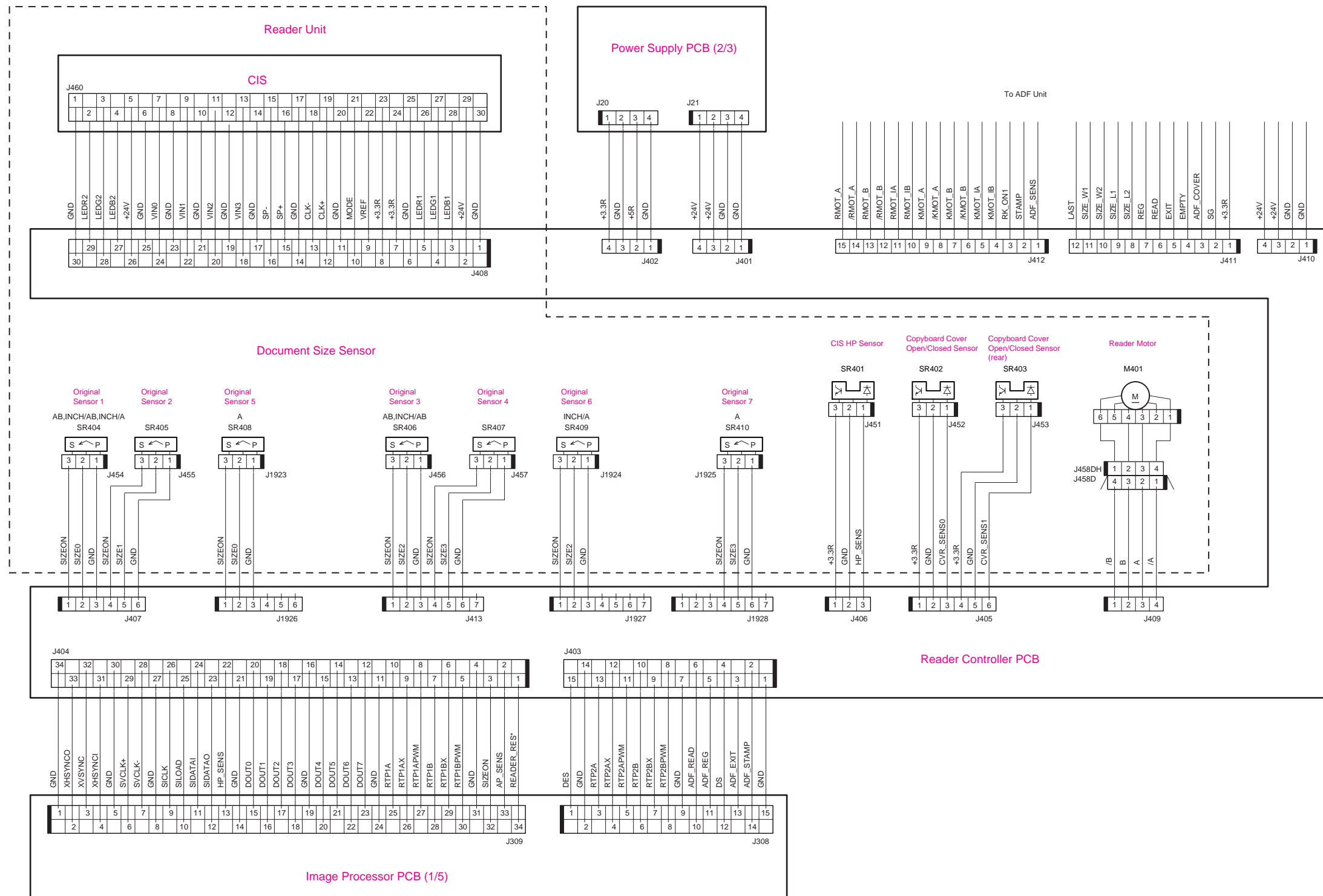
iR2016J / iR2016 / iR2020 / iR2016i / iR2020i



F-2-2

General Circuit Diagram 3

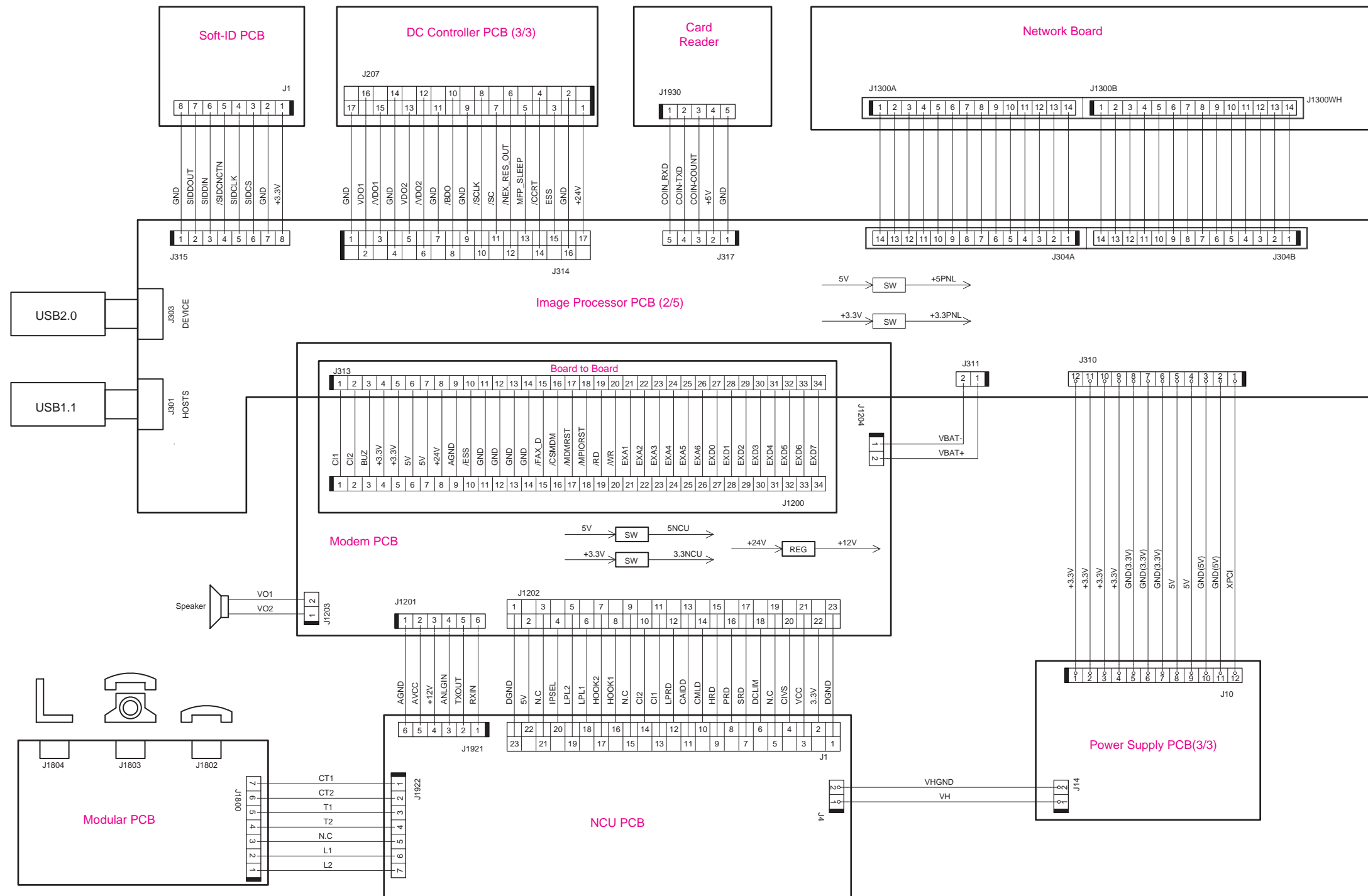
iR2016J / iR2016 / iR2020 / / iR2016i / iR2020i



F-2-3

General Circuit Diagram 4

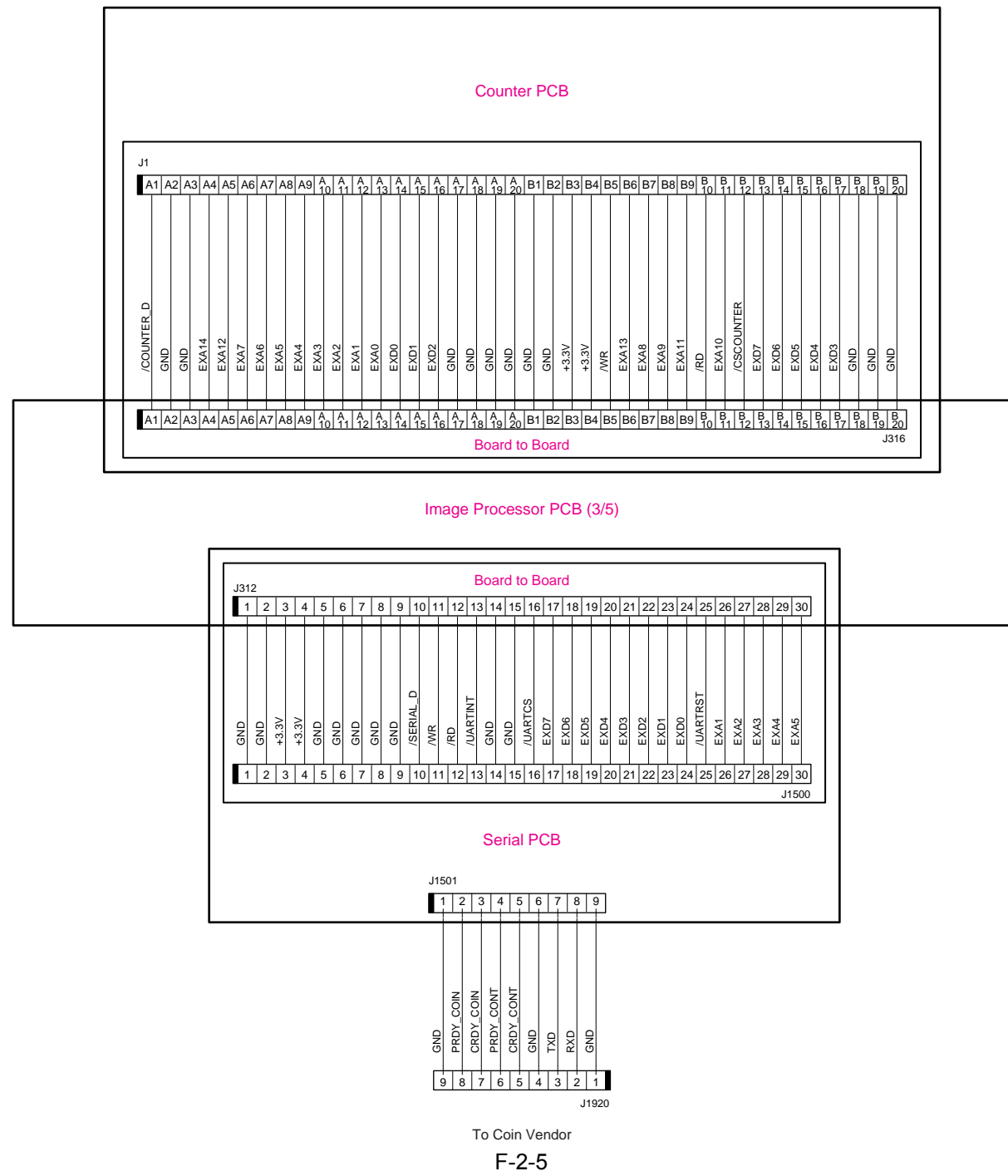
iR2016J / iR2016 / iR2020 / / iR2016i / iR2020i

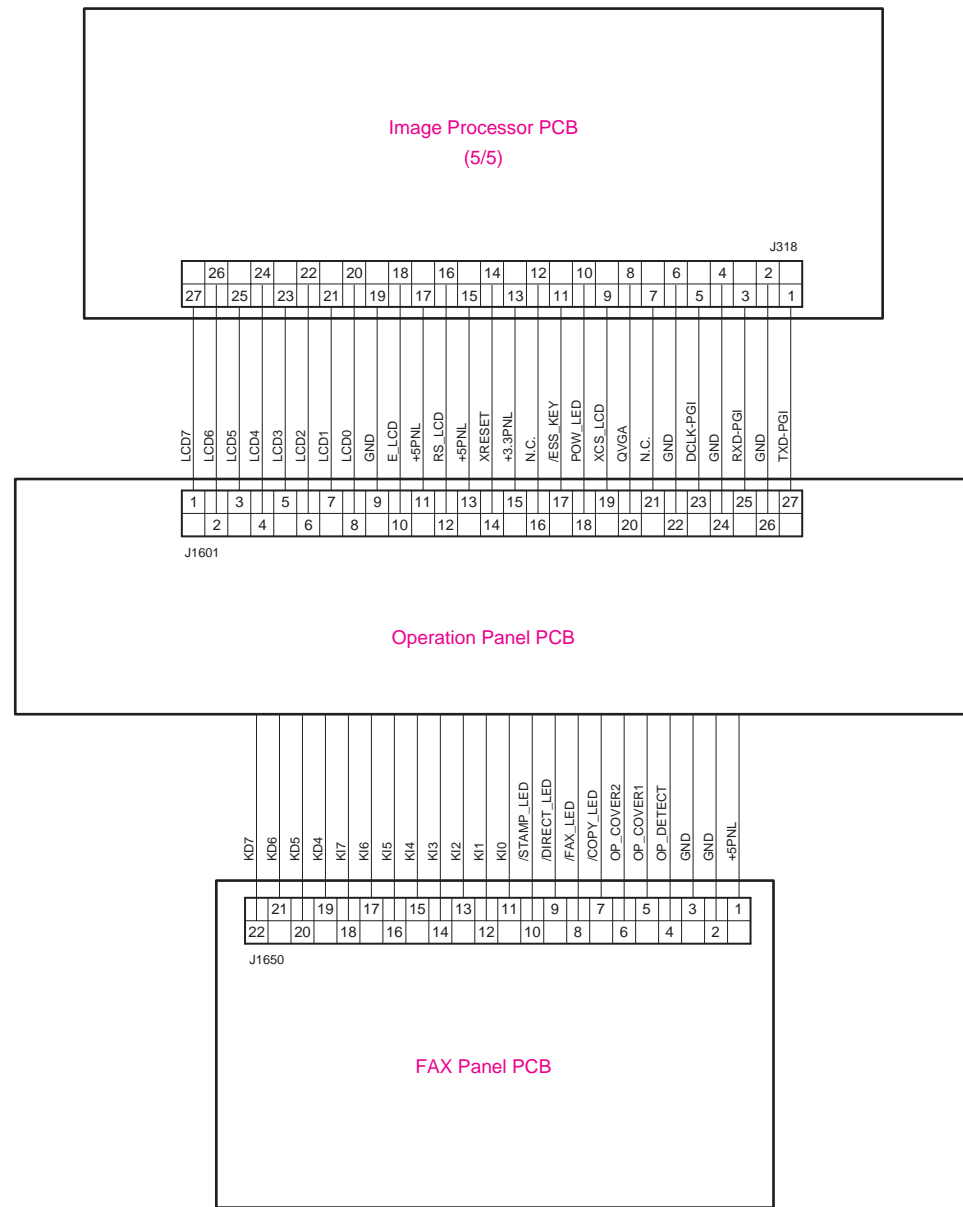


F-2-4

General Circuit Diagram 5

iR2016J / iR2016 / iR2020 / iR2016i / iR2020i

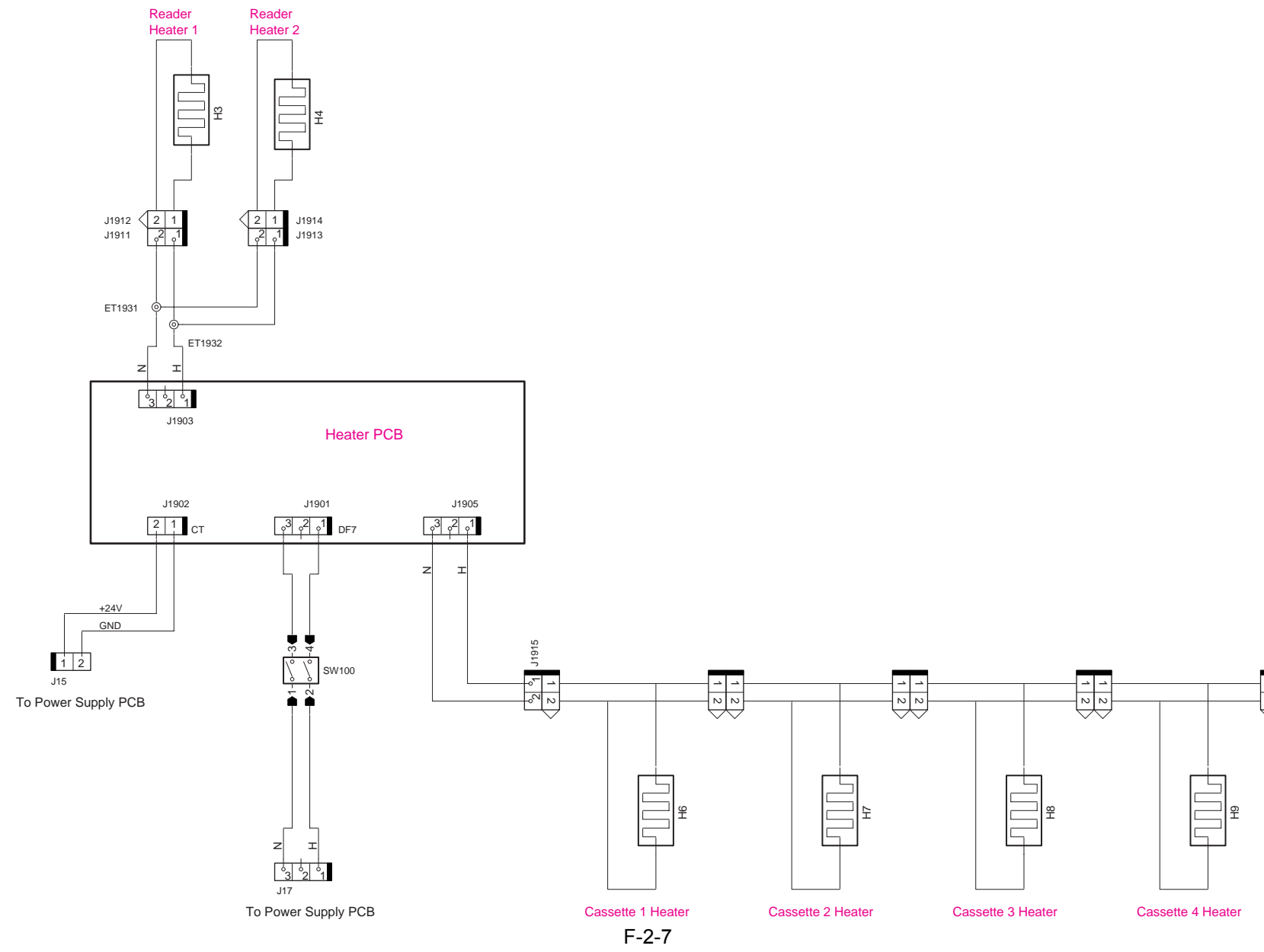




F-2-6

General Circuit Diagram 7

iR2016J / iR2016 / iR2020 / / iR2016i / iR2020i



Sep 14 2005

Canon